

## Important School Zone Signs



### No Parking

Stop here for up to two minutes to drop off and pick up passengers. You must stay within three metres of your vehicle at all times. No parking zones provide a safe place to drop off or pick up children.

**PENALTY EXCEEDS \$190 + 2 demerit points**



### No Stopping

Do no stop here for any reason. No stopping zones keep sight lines clear for drivers and children. Drivers also must not stop at the side of a road marked with a continuous yellow line; this line means the same as no stopping.

**PENALTY EXCEEDS \$345 + 2 demerit points**



### Bus Zone

Can only be used if driving a bus. A Bus Zone allows buses to drop off and pick up passengers safely.

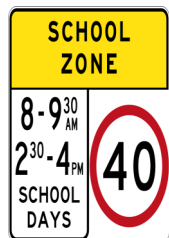
**PENALTY EXCEEDS \$345 + 2 demerit points**



### Children Crossing

Orange children crossing flags and hand-held stop signs must be obeyed.

**PENALTY EXCEEDS \$570 + 4 demerit points for stopping on or near children's crossing**



### Speeding

Speeding increases the chance of a crash resulting in severe trauma and injury.

**MIN PENALTY EXCEEDS \$480 + 2 demerit points**

**MAX PENALTY \$3895 + 7 demerit points**

## You are Responsible for your Children's Safety.

Here are a few things you can teach your children about being alert in the road environment to help keep them safe as pedestrians:

- Alert them to the dangers associated with vehicles entering or exiting driveways.
- STOP just back from the kerb
- LOOK LEFT, LOOK RIGHT, LOOK LEFT AGAIN
- WALK DON'T RUN
- LISTEN for the sounds of approaching traffic

## Your Driving Affects All Road Users.

Sticking to the rules and showing courtesy, respect and patience makes driving a better experience for everyone.

By working together, we can help  
keep school zones safe for  
everyone.



Fines are current at time of printing February 2021.  
For full list of penalties and offences visit: [rms.nsw.gov.au/documents/roads/safety-rules/demerits-school.pdf](https://rms.nsw.gov.au/documents/roads/safety-rules/demerits-school.pdf)

Junee Shire Council  
24 Belmore Street  
Junee NSW  
02 6924 8100  
[www.junee.nsw.gov.au](http://www.junee.nsw.gov.au)



GLOVE BOX GUIDE

## SCHOOL ZONE SAFETY

This is a quick guide to school zone parking rules and signs at your children's school.

## We all have a responsibility to keep each other safe and protect our children from road trauma.

Road safety is a shared responsibility. To keep children safe follow the road rules, particularly in school zones. Traffic rules and parking restrictions are there to improve safety around schools.

Next time you are in a school zone here are some simple tips to follow:

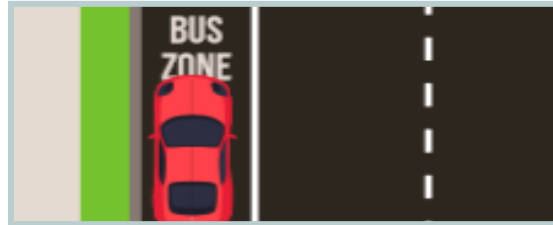
- Do not stop in a No Stopping Zone; it is illegal and unsafe
- It's illegal and unsafe to stop on a children's crossing – even to let children out of a car
- Do not queue for a spot. Drive around the block if you can't find a park
- U-turns, three-point turns are dangerous, and need to be avoided in school zones
- It is safest to avoid reverse parking outside a school
- Drop off and pick up children on the school-side of the road
- The safest door on a car is the kerbside rear door
- All passengers need to stay buckled up until the vehicle has stopped
- No mobile phones
- You must not stop or park in a bus zone for any reason (including queuing or waiting for a space) unless you are driving a bus. If times are shown on the sign, you are not allowed to stop during those times

## Common Parking Rules

### Stopping in a Bus Zone

You must not stop or park in a bus zone unless you are driving a bus.

**PENALTY EXCEEDS \$345 + 2 demerit points**



### Parking Across Driveways and Footpaths

Do not stop across a driveway or footpath in a school zone, not even to drop off or pick up students.

**PENALTY EXCEEDS \$345 + 2 demerit points**



### Stopping at Intersections

Don't stop within 10 metres of an intersection.

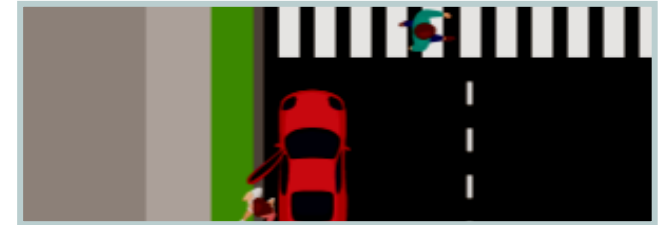
**PENALTY EXCEEDS \$460 + 2 demerit points**



### Parking near Pedestrian Crossings

You must not stop on or within 20 metres before a pedestrian crossing or 10 metres after a pedestrian crossing.

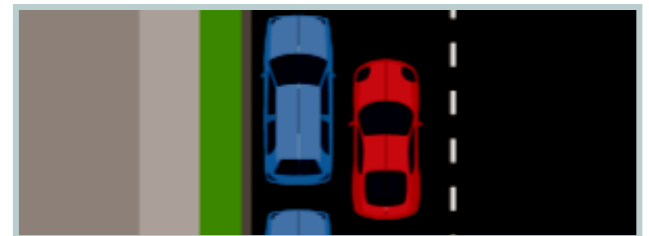
**PENALTY EXCEEDS \$460 + 2 demerit points**



### Double Parking

Don't stop on a road between the centre of the road and another vehicle that is parked at the side of the road, to wait or pick up or drop off passengers.

**PENALTY EXCEEDS \$345 + 2 demerit points**



### U-Turns

You can be penalised for dangerous U-turns in a school zone.

**PENALTY EXCEEDS \$345 + 3 demerit points**

