



WANTABADGERY

**VILLAGE
IMPROVEMENT
PLAN**

Adopted: 22 June 2021

Minute No: 06.06.21

Village Improvement Plan

The Junee Local Government Area includes several villages. Village Improvement Plans have been prepared for Bethungra, Illabo, Old Junee and Wantabadgery. Each village has its own unique history, community, and assets.

There are several items within the *Community Strategic Plan* (CSP) for our localities and villages including an entire strategy focused on enabling viable localities and villages. Council's delivery of outcomes against the Community's Strategic Plan is identified in the *Delivery Program and Operational Plan* (DPOP). Within the Council's DPOP at Strategy 2.1.1.4 the Delivery Program Activity is to facilitate growth in our localities and villages outside of Junee township through the development and implementation of village improvement plans.



There are very active and cohesive communities who have delivered great projects and programs that serve the interest of their community. The purpose of the plan is to encourage a shared spirit for the past, present, and future of each village.

The Wantabadgery Village Plan will act as a guide for future planning and development for the community. This plan identifies the preferred future, opportunities, and challenges, to align with the Junee Community Strategic Plan through its strategies and objectives which have been developed in consultation with the local community.

In preparation of these plans, engagement with community members in each of the villages has been undertaken in the form of village meetings. In addition, the period of public exhibition and comments/feedback from the 355 Village and Rural Improvement Committee ensured the Village Improvement Plans are an accurate reflection of the priorities of each of the Villages into the future to ensure Council has a framework to work together with each community to build a brighter future.

Introducing Wantabadgery

Wantabadgery is located 27.9km south-east of Junee, 19km from Nangus and 42.5km from Wagga. The Village has an estimated population of 187 (2016 Census). Wantabadgery has a strong historical link to bushrangers and prides itself in this unique past. A siege held in the 1870's by Captain Moonlite and local police at the Wantabadgery station, permanently marked the village in Australian bushranger history. Like surrounding villages, Wantabadgery has strong links with the agriculture sector, with many families owning land and utilising it for primary production. This was further enhanced after World War Two with the splitting of two large rural holdings, Wantabadgery Station and Wantabadgery West, for soldier settlement blocks.

The Wiradjuri people are acknowledged as the traditional custodians of the land where Wantabadgery is situated. Wiradjuri people are of the goanna totem and are the people of the three rivers - the Wambool (Macquarie), the Kalari (Lachlan) and the Murrumbidgee. They have lived on these lands for more than 40,000 years.



Brief History of Wantabadgery

Wantabadgery was initially inhabited and explored by Indigenous people of the Wiradjuri Tribe, initially calling the area 'Pondebadgery' when the newly arrived European settlers came across the village and asked for a name in 1826. Early settlers later realised the correct name of the village was Wantabadgery, meaning 'getting wet'. The explorer Charles Sturt was the first European explorer to visit the area and described the village as *"So delightful a spot... soil of the richest description... capable of depasturing the most extensive flocks."* In 1833, Wantabadgery was established as a village, with a local station built. Following this, the

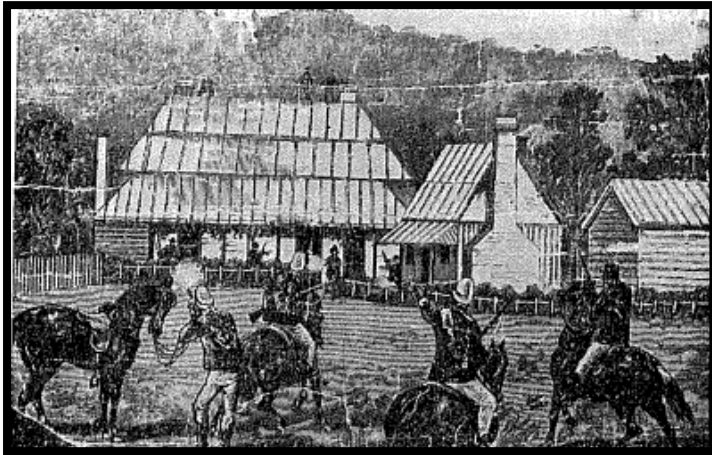
Wantabadgery Post Office opened on 1 December 1923 and subsequently closed in 1966. At the end of the Second World War, soldiers were offered settlement blocks in rural areas. There were fourteen settlement establishments located in the Wantabadgery region, with some of these blocks having houses, or huts.

*** Information and photographs from 'Back to Wantabadgery' by Lucy Gallagher.*

A Brief History of the Wantabadgery District by Keith Swan', published by the "Back to Wantabadgery Committee" 1st April, 1972.

'JUNEE; speaking of the past: Volume 3. Towns and Social Activities. Edited by Shirley Morris, for the Junee Shire Arts Council.'

A guide to Australian Bushrangers, 'Wantabadgery: 140 years on'



The police arrive to relieve the siege at the Wantabadgery homestead.



Arrival of Wagga Police at Wantabadgery Station.



The final encounter with the bushranger at McGlade's Hut.



Typical Wantabadgery country.

Present Day Wantabadgery

Reviewing recent census data, Wantabadgery's population is 187 (2016 Census). While most residents work in agriculture, families and individuals seeking a quiet, comfortable village also choose to live in Wantabadgery. Wantabadgery not only offers amazing views, but also outdoor opportunities and activities as it is situated near the Murrumbidgee River and Sandy Beach Reserve, attracting many new and returning visitors. With swimming and camping opportunities, Wantabadgery is not only a desirable place to visit, but a comfortable and quiet village to settle down and live in.

Key Community Assets, Facilities and Infrastructure includes:

- Wantabadgery Cemetery
- Wantabadgery Transfer Station
- Wantabadgery McDonald Memorial Hall
- Children's Playground
- Wantabadgery Tennis Courts
- Local and surrounding roads
- Constable Bowen Memorial
- Sandy Beach and McGleades Hill Road



Wantabadgery McDonald Memorial Hall.



Community playground located at the Wantabadgery McDonald Memorial Hall.



Wantabadgery Transfer Station wrap and signage.



The Wantabadgery Community Engagement

Information for this plan has been gathered using a variety of methods. This has included consultation with community members during the community meeting held in April 2021, together with dialogue with village groups, committees and individuals. Submissions and comments made during the public exhibition period and the input of the 355 Village and Rural Improvement Committee prior to formal adoption of the Plan also formed an important part in the plan's development.

What people love about Wantabadgery

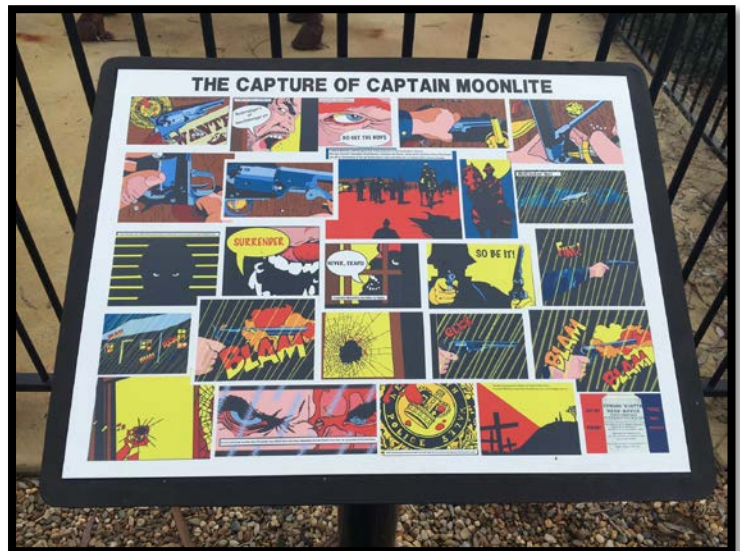
Evident during the consultation process was Wantabadgery residents' strong connection to their village. All residents felt strongly about ensuring the presentation of the village was a priority, as well as providing accessible amenities for visitors. Residents value the peace and quiet in the village and have an appreciation for the land and agricultural opportunities provided to the village.

Community members identified the following as important elements making their community strong and engaging. These elements were also identified as essential to maintain and enhance into the future.

- The proximity between both Junee and Wagga is seen as a desirable trait of Wantabadgery, as well as the proximity to saleyards and local attractions, such as Sandy Beach.
- Residents adore the landscape and the scenic beauty of the village. The community wants to ensure the village keeps this beauty through regular upkeep and maintenance, as well as the establishment of facilities to increase tourist attractions to the village.
- The community heavily appreciates the historical commemorations within the village - specifically detailing their adoration for the Constable Bowen's Memorial statue and the tourism it brings to the village.
- Community events, such as the picnic races, are an essential component which brings the community together and promotes village spirit and pride, particularly given the fundraising undertaken during local events.
- The community memorial hall as a meeting place for community members.
- House and building affordability.
- A proactive Council who has in recent times assisted with upgrading roads in the village.



Captain Moonlite and Constable Bowen Memorial.



Sandy Beach Reserve.

Our People

The people of Wantabadgery are a strong like-minded community, with a shared approach to ensuring their village is well presented and taken care of. There is a strong sense of community spirit and shared values of inclusiveness. The Wantabadgery community values connections within their own village and the wider community. Strong and reliable telecommunications assets are essential to the community to ensure connections are maintained.

Our Environment

The land and surrounding areas are of great importance for those within and around Wantabadgery, especially as it relates to agriculture and tourism. Many residents rely on the agriculture industry for their livelihood, furthering their appreciation for their location and the affordability of property within and surrounding Wantabadgery. The community requests regular and continual road maintenance to sustain safety in their environment, ensuring trees are not too close to the road, weed infestation along road edges kept under control and roads and intersections are safe. Concerns were raised regarding road flooding which can occur in extreme weather events. Drainage considerations was a focus within the community meeting.



Wantabadgery agricultural land (Photo credit: Carly Parsons).

Our Community Groups and Services

The community spirit is evident within Wantabadgery, featuring a large proactive shire and a high proportion of residents open and willing to help one another and the village. The community interactions and events, such as the Picnic Races, local 'cook-ups' and the weekly Men's group are heavily appreciated. The community wants to ensure community integration activities continue to occur. As many residents have a strong inclination to assist those in need, events that aid and donate to charities is well established and the community is keen for these events to continue. The Wantabadgery community would like to see an increase in public amenities, such as public toilets and rest stops, as these would both aid the events held and enable more visitors and residents to attend.

Our Facilities

The Wantabadgery community is highly appreciative of the existing amenities and facilities their village possesses. The Memorial Hall is seen as a central meeting point and the regular upkeep of this hall is seen as a priority. The residents valued the construction of their new playground, however regular upkeep and maintenance of the land surrounding it (mowing and removing weeds) is desirable. The transfer station is also a vital asset to the community, although there were concerns about its capacity.

Our Economy

The local village events and activities are important to the residents and the regular introduction of new events and supporting current opportunities (such as bike riders) is desirable for the village. Events such as the Picnic Races and local club activities not only unite the community but help aid local charities.

Successful and engaging local businesses within Wantabadgery is highly desirable for the community to aid the continual development of the village. The Wantabadgery community has a cohesive goal to engage the entire broader community and with help from external means, such as the Council, they believe they can increase tourism and draw businesses to the village.

The Preferred Future for Wantabadgery

Residents saw the future of Wantabadgery as an aesthetically pleasing, cohesive village to live in, with enough available amenities to aid the residents, as well as those visiting and passing through. The community aims to reach the broader area and increase the attendance at their local events. The aesthetics of the village were a priority, with the residents aiming to improve the village. Other important elements to the Wantabadgery community included:

- Ensuring the safety of roads and intersections surrounding the Village including:
 - The road between Junee and Wantabadgery as it is subject to flooding.
 - The culverts along this road were areas of concern and intersections could be improved upon.
 - Signage to the village and road markings with the possibility of fog lines is desirable.
 - Continual upgrade of roads.
 - Containment of increasing khaki weed infestation along road edges.
 - The lack of signage within and around the village, especially regarding bus stops for children was requested. The signage to mark the location of Sandy Beach was also requested to be relocated as it is felt current signage confuses visitors to the Village.
- Regular upkeep and maintenance of public areas, such as around the Memorial Hall and the playground, as well as the shoulders of the road and nature strip alongside footpath is needed.
- The suggestion of an area, with public amenities, and a safe place for travellers to stop and rest was made and generally supported by community members. The Wantabadgery community believe public amenities are vital to their village and assets such as public toilets and seating within community areas are desirable.
- Seating, a shade structure and a garbage bin within the playground area is desirable.
- The residents suggested an upgrade of the Transfer Station, due to the lack of space and storage. In addition, the community also stated their desire for a more aesthetically pleasing area; with trees surrounding the Transfer Station.

- Wantabadgery has nowhere to post mail. This is seen as an inconvenience for the residents and residents would like a Post Office Box established in the village which will enable them to post mail.
- Phone reception within the Village has improved, however surrounding farm areas are located within service 'black-spots' and residents often struggle to make phone calls or access the internet. The residents of Wantabadgery prioritised their need for better service and telecommunications. It is felt by many that the recent additional telecom towers have been placed in incorrect areas and they have not improved the poor reception the community experience in areas surrounding the Village.
- Attracting engaging, well maintained, and profitable local business to aid tourism into the village.

Council's Commitment to Wantabadgery

June Shire Council has committed a range of resources to enhance the amenities of Wantabadgery over recent years. These have included support for community events, through to developing and maintaining infrastructure in roads and community facilities.

The following outlines some of Council's recent undertakings within Wantabadgery.

PROJECT	TIMEFRAME
Installation of playground and fencing around playground	Completed
Entrance Sign	Completed
Wrap for Transfer Station	Completed
Sealed unsealed roads	Completed
Shade Structure at Sandy Beach, including concrete slab and gas BBQ	2020/21
New fencing for the Cemetery	Completed
Footpath	2020/21

June Council values all members of the broader community. Council has made an ongoing commitment to continue to support Wantabadgery through ongoing consultation and investment into the infrastructure and amenities of the village. A strategic and advocacy approach will be maintained reflected in the strategies, objectives, and outcomes identified in the Wantabadgery Village Improvement Plan, as well as the 'Making Tracks' initiative.

Attachments:

1. Aerial Map of Wantabadgery
2. Village Map
3. Recent and Planned Capital works mapped.



Belmore Street
PO Box 53
June NSW 2663
Phone: (02) 6924 8100
Fax: (02) 6924 2497
www.june.nsw.gov.au

Important Notice!

This map is not a precise survey document. Accurate locations can only be determined by a survey on the ground.

This information has been prepared for Council's internal purposes and for no other purpose. No statement is made about the accuracy or suitability of the information for use for any purpose (whether the purpose has been notified to Council or not). While every care is taken to ensure the accuracy of this data, neither the June Shire Council nor the LPI makes any representations or warranties about its accuracy, reliability, completeness or suitability for any particular purpose and disclaims all responsibility and all liability (including without limitation, liability in negligence) for all expenses, losses, damages (including indirect or consequential damage) and costs which you might incur as a result of the data being inaccurate or incomplete in any way and for any reason.
© The State of New South Wales (Land and Property Information), © June Shire Council.

True North, Grid North and Magnetic North are shown diagrammatically for the centre of the June Local Government Area. Magnetic North is correct for 2008 moving easterly by 0.04° in about five years.

Important

This map was produced on the GEOCENTRIC DATUM OF AUSTRALIA 1994 (GDA94), which has superseded the Australian Geographic Datum of 1984 (AGD66/84). Heights are referenced to the Australia Height Datum (AHD) heights. For most practical purposes GDA94 coordinates and satellite derived (GPS) coordinates based on the World Geodetic Datum 1984 (WGS84) are the same.

Projection: GDA94 / MGA zone 55

Date: 10/05/2021

Drawn By: Braiden Phillipse

Wantabadgery

Map Scale: 1:7500 at A4



Belmore Street
PO Box 53
June NSW 2663
Phone: (02) 6924 8100
Fax: (02) 6924 2497
www.june.nsw.gov.au

Important Notice!

This map is not a precise survey document. Accurate locations can only be determined by a survey on the ground.

This information has been prepared for Council's internal purposes and for no other purpose. No statement is made about the accuracy or suitability of the information for use for any purpose (whether the purpose has been notified to Council or not). While every care is taken to ensure the accuracy of this data, neither the June Shire Council nor the LPI makes any representations or warranties about its accuracy, reliability, completeness or suitability for any particular purpose and disclaims all responsibility and all liability (including without limitation, liability in negligence) for all expenses, losses, damages (including indirect or consequential damage) and costs which you might incur as a result of the data being inaccurate or incomplete in any way and for any reason.
© The State of New South Wales (Land and Property Information), © June Shire Council.

True North, Grid North and Magnetic North are shown diagrammatically for the centre of the June Local Government Area. Magnetic North is correct for 2008 moving easterly by 0.04° in about five years.

Important

This map was produced on the GEOCENTRIC DATUM OF AUSTRALIA 1994 (GDA94), which has superseded the Australian Geodetic Datum of 1984 (AGD66/84). Heights are referenced to the Australia Height Datum (AHD) heights. For most practical purposes GDA94 coordinates and satellite derived (GPS) coordinates based on the World Geodetic Datum 1984 (WGS84) are the same.

Projection: GDA94 / MGA zone 55

Date: 10/05/2021

Drawn By: Braiden Phillipse

Wantabadgery

Map Scale: 1:7500 at A4



Wantabadgery **Capital Works and Projects** **30 June 2019 to 31 March 2021** **Including Planned Works**



Legend

- Village or Locality
- Gravel Road Repairs
- Reconstruction
- Sealed Road Repairs
- Sealing Upgrade
- Drainage Upgrade
- New Work
- Sealed Road
- Unsealed Road
- Main Road
- Railway
- LGA Boundary

0 5 10 km

